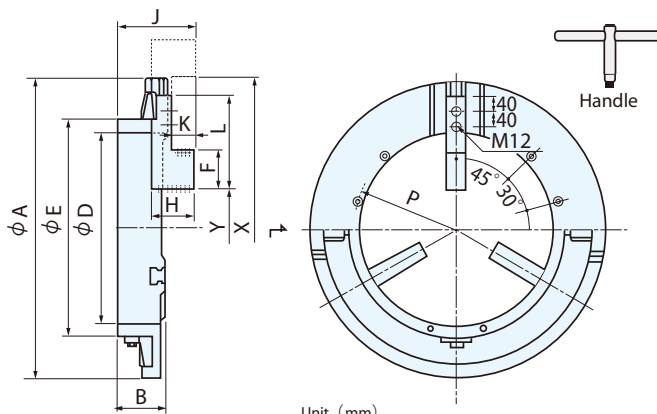
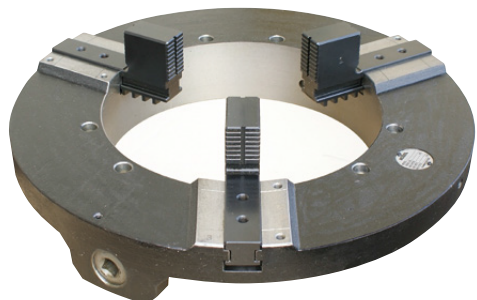


WELDING POSITIONER CHUCKS

WPS SERIES

3-JAW SELF-CENTERING CHUCKS FOR WELDING POSITIONER

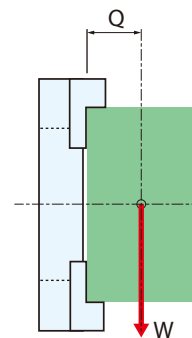
- This is designed to be lightweight, low profile, low center of gravity so as to be optimal for use on positioner, etc.
- Large gripping range enables easily attach/detach of a workpiece.



Unit (mm)

Model	A	B	D	E	F	H	J	K	L	φP	Mounting bolt
WPS 500	500	105	270	330	70	100	169.5	60	200	300	6-M12× 100
WPS 600	600	105	365	425	70	100	169.5	60	200	400	6-M12× 100
WPS 800	800	120	540	600	100	115	195.5	65	250	575	6-M16× 120
WPS 1000	1000	135	700	760	100	115	210.5	65	250	735	6-M16× 130
WPS 1200	1200	145	830	900	100	115	220.5	65	250	865	6-M16× 140

Model	Gripping range		Gripping force kN (kgf)	Q×W	Load capacity kg	Weight kg
	Y	X				
WPS 500	50~330	330~540	20 (2000)	100mm× 600kg	800	65
WPS 600	150~400	400~620	20 (2000)	150mm× 600kg	1000	87
WPS 800	250~550	550~830	29 (3000)	200mm× 600kg	1500	110
WPS 1000	450~750	750~1050	29 (3000)	250mm× 600kg	1500	220
WPS 1200	600~900	900~1150	29 (3000)	300mm× 600kg	2000	320



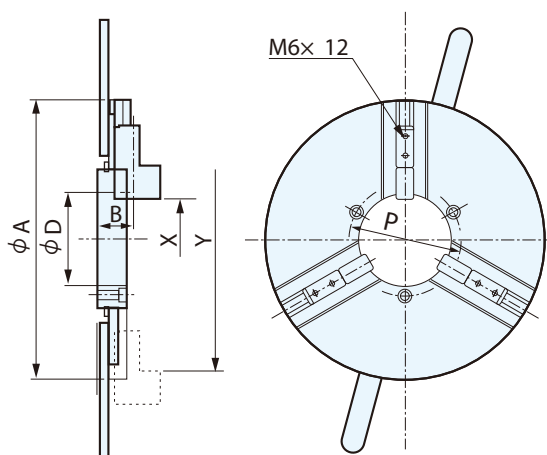
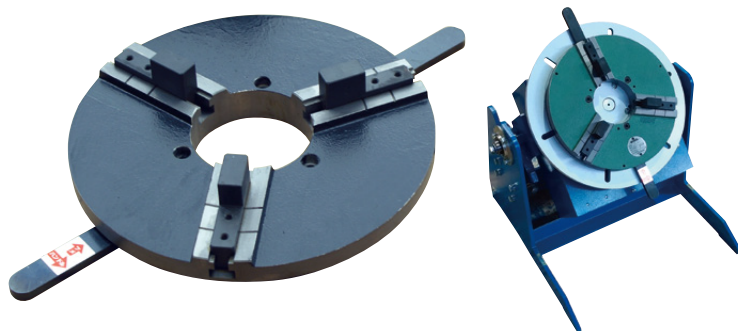
SPECIAL CHUCK / OTHERS

WELDING POSITIONER CHUCKS

WP SERIES

3-JAW SELF-CENTERING CHUCKS FOR WELDING POSITIONER

- Low profile and low center of gravity allow large load capacity.
- Imposed load to positioner is not much due to small size and light.
- Large gripping range enables easily attach/detach of a workpiece.



Unit (mm)

Model	A	B	D	φP	Mounting bolt	Gripping range		Gripping force kN (kgf)	Weight kg
						X	Y		
WP 200	200	39	80	100	M8×40	20~130	110~210	2 (200)	6
WP 300	300	39	100	120	M8×45	80~190	170~280	2.5 (250)	12
WP 400	400	45	170	220	M10×55	120~250	250~380	3.5 (350)	24